

Electronic empty housings

WEB 1001

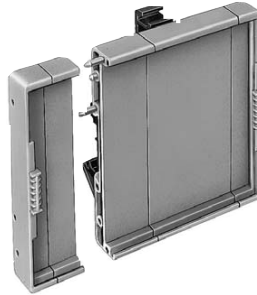
System benefits

- can be assembled to any length
- possible to have complete custom-made design
- can be assembled together quickly due to the plug-in modular principle
- high torsional rigidity due to the firm interconnection of the individual elements
- can be latched onto all DIN EN mounting rail 32/35 using the universal foot

Material:

Housing: PA 6 GU30 UL 94-HB

Foot: PA 66 UL 94-V2

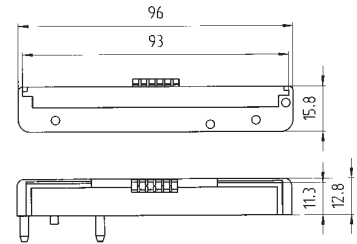
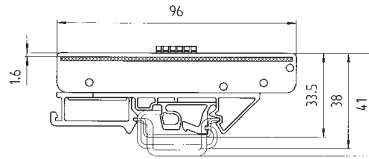


WEB 1001

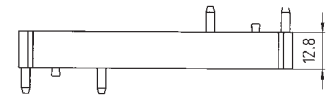
Variable x 96 x 33.5

Dimensions (mm): W x H x D

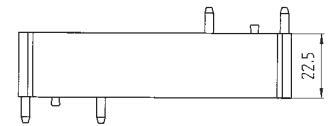
Individual parts	Type	Part No.	Box Qty
1. End cover with label holder	Width 12.8 mm	01.001.5593.0	50
1. End cover without label holder	Width 12.8 mm	01.001.5993.0	50
2. Middle section of housing	Width 12.8 mm	01.001.5853.0	50
3. Middle section of housing	Width 22.5 mm	01.001.5653.0	50
4. Middle section of housing	Width 44.8 mm	01.001.5753.0	50
5. Universal foot	Width 23 mm	05.583.0053.0	50
5. Universal foot (overall width from 70.4 mm)	Width 68 mm	05.583.0153.0	50
Accessories			
Mounting rail 35, DIN rail 7.5 mm high L = 2 m	Type	Part No.	Box Qty
Mounting rail 35, DIN rail 15 mm high L = 2 m	35 x 27 x 7,5 EN 60715	98.300.0000.0	1
Mounting rail 32, G-rail L = 2 m	35 x 24 x 15 EN 60715	98.360.0000.0	1
PCB (not included)	9006 EN 60715 G-32	98.190.0000.0	1
End clamp, Polyamide 8 mm wide TS 35	see drawing for dimensions		
End clamp, Polyamide 10 mm wide U-Foot	9708/2 S 35	Z5.522.8553.0	100
Marker tag, unmarked	WE 1/U	Z5.523.5753.0	100
Marker tag, marked	9003 C	04.242.0850.0	500
Marker tag, marked	9003 CB	04.842.0850.0	500
See pages 582–585 for further labelling systems			



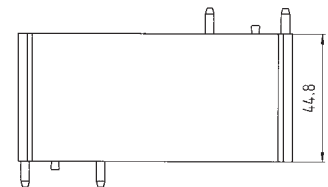
Width 12.8 mm 01.001.5593.0 50



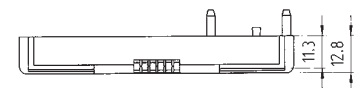
Width 12.8 mm 01.001.5853.0 50



Width 22.5 mm 01.001.5653.0 50

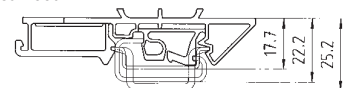


Width 44.8 mm 01.001.5753.0 50



01.001.5593.0 50

Universal foot



Width 23 mm 05.583.0053.0 50

Width 68 mm 05.583.0153.0 50

(overall width from 70.4 mm)

Subject to change without further notice